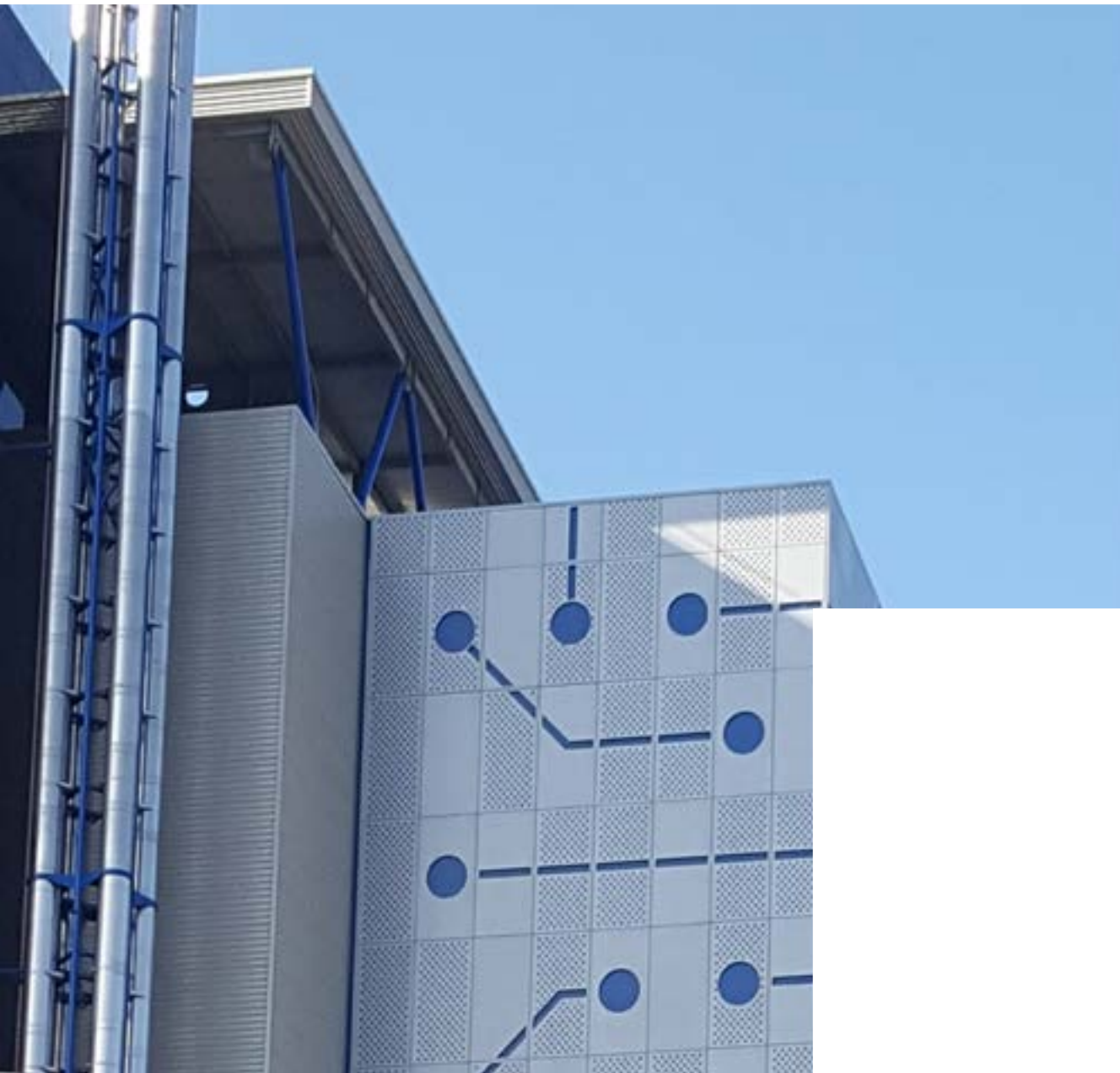


Bailey

Cohort™
Rainscreen Support System

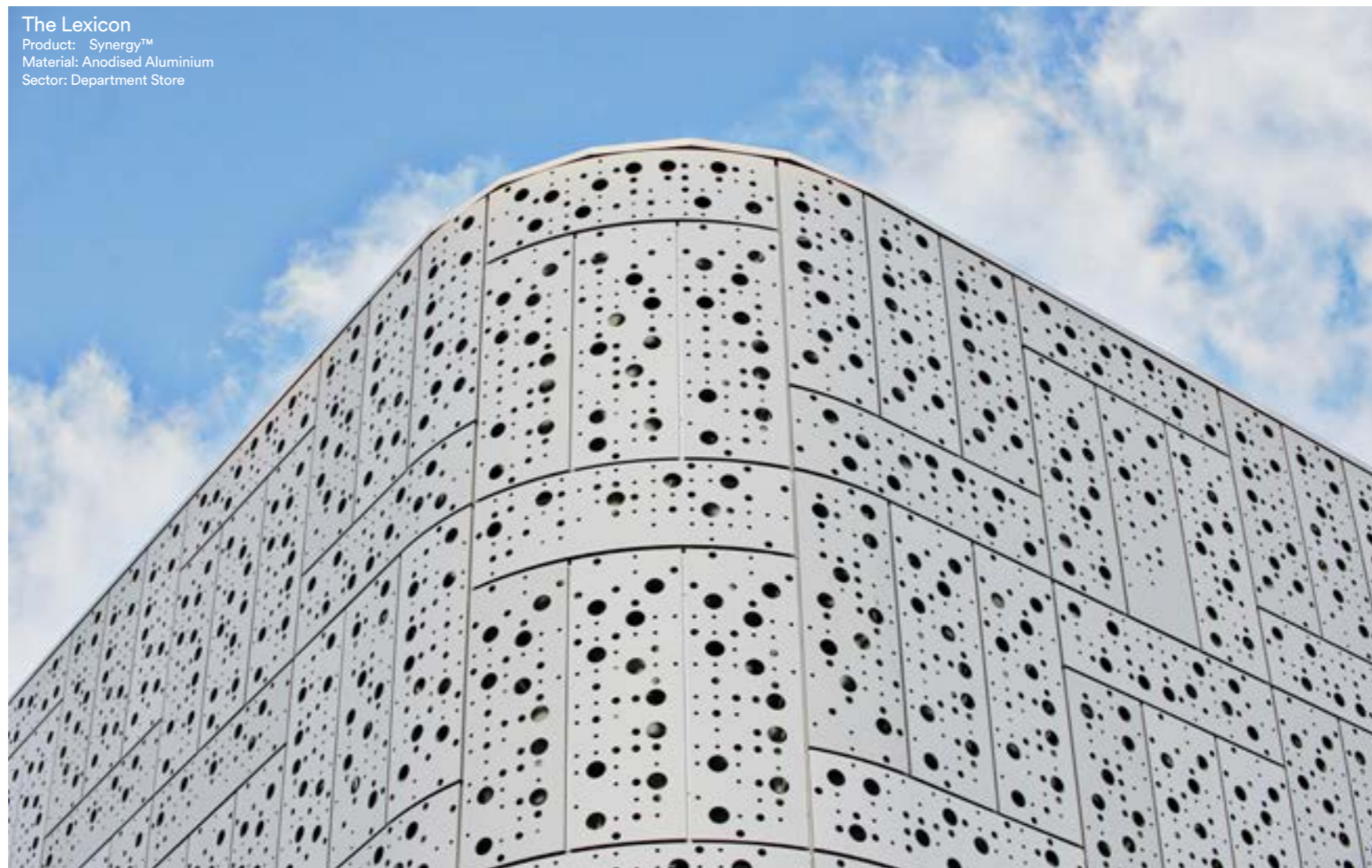
Stone wool insulation
core composite panel



Key benefits

Manufactured with a stone wool insulation core which is non-combustible as defined by the Building Regulations applicable to all parts of the United Kingdom.

The Cohort™ carrier panel is an interlocking, stone wool core insulated panel designed to support Bailey rainscreen systems, creating a weathertight building envelope early in the build programme.



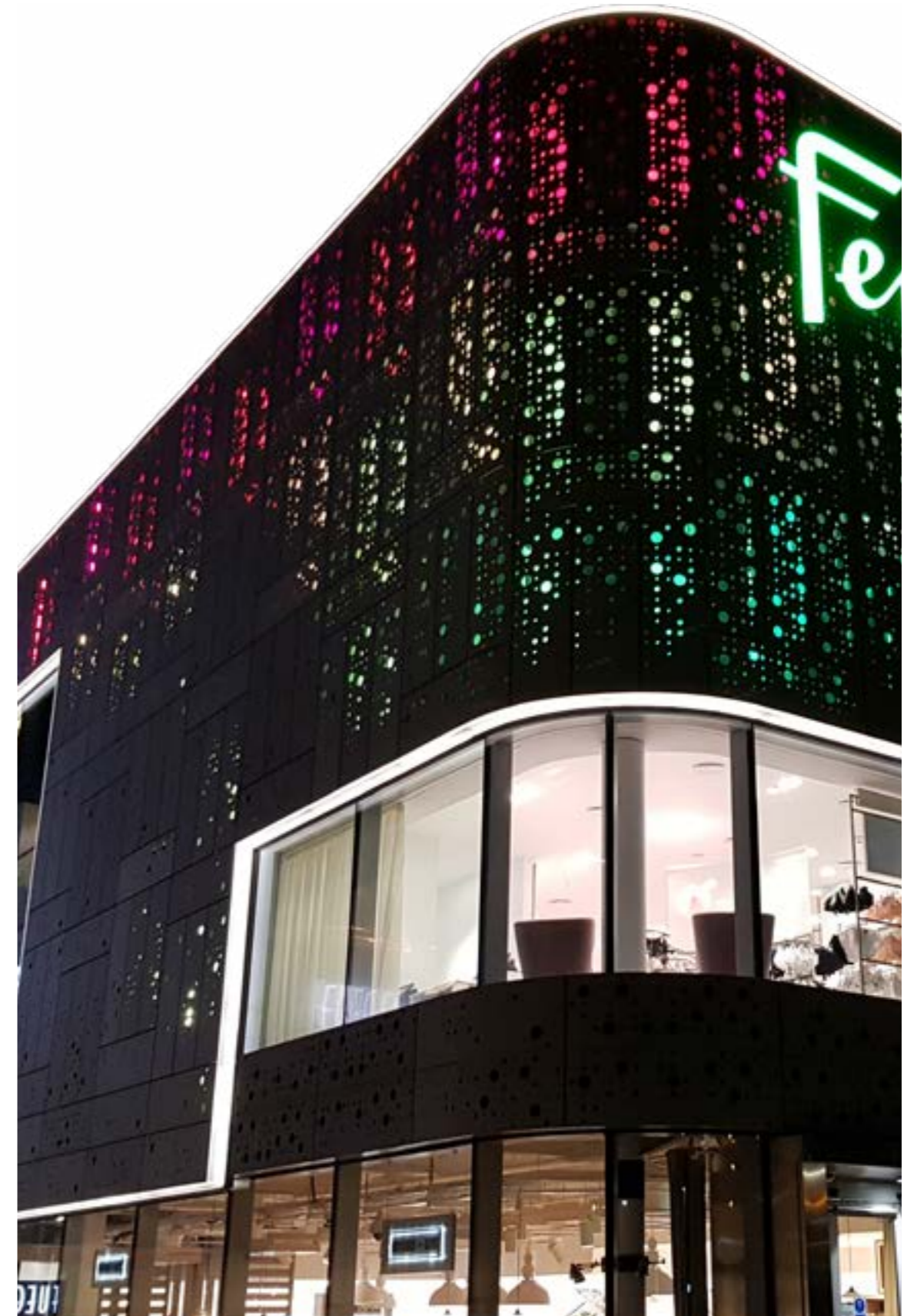
Benefits and features

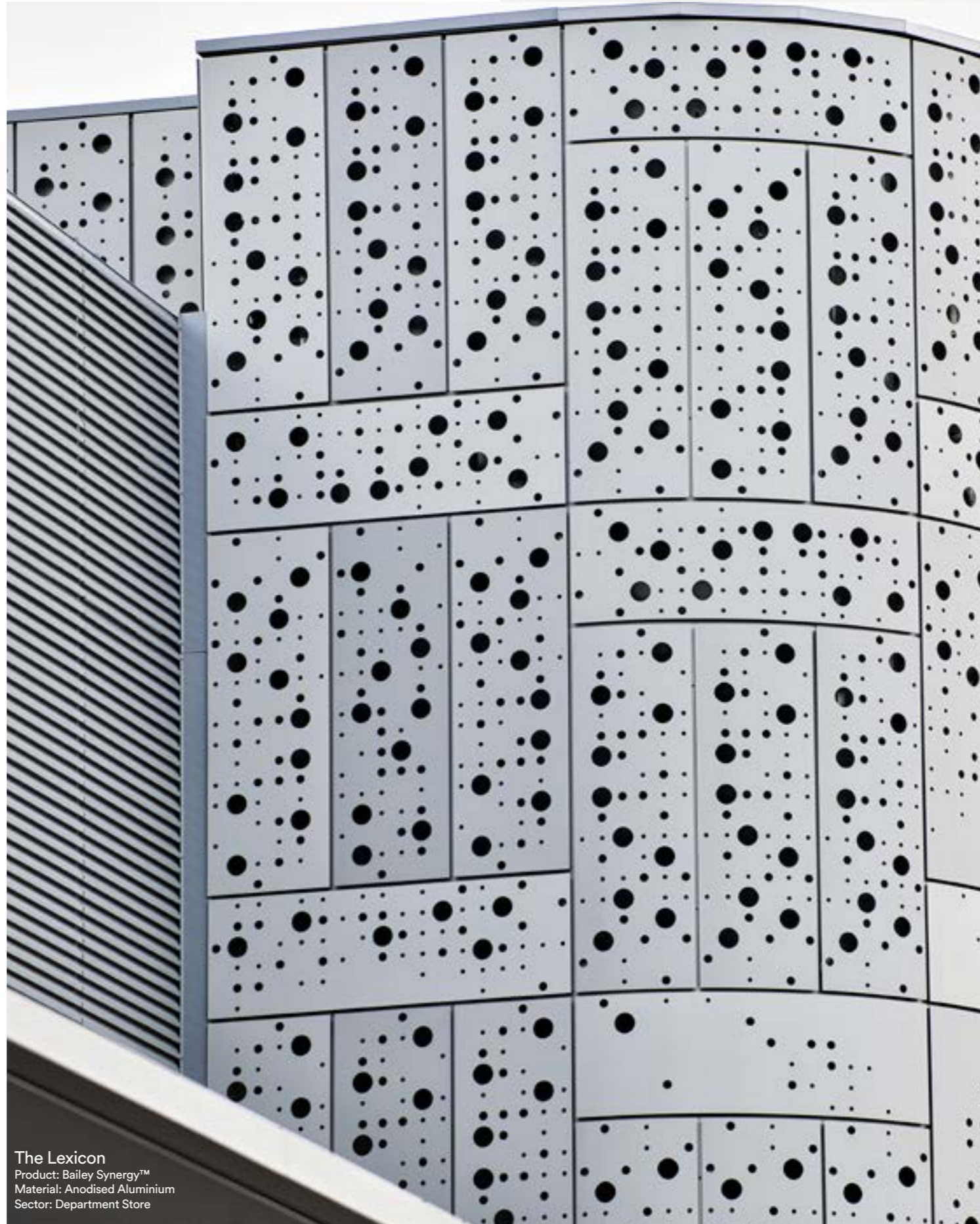
- Thermal Conductivity 0.039 W/mK.
- Achieves Fire resistance of EI120 when tested to EN13501-2:2016.
- All panel lengths are subject to technical verifications and are available in a variety of sizes up to 15m.
- Easy to install.
- Weathertight stone wool insulation core.
- Materials classified as A1 in accordance with EN 13501-1:2007+A1:2009.

Panel Cross Section



Panel Joint





The Lexicon
 Product: Bailey Synergy™
 Material: Anodised Aluminium
 Sector: Department Store

Available Lengths

All panel lengths are subject to technical verification. Panels less than 2.0m long can be supplied but may be subject to a short sheet surcharge. Max length available for the panels is 15m.

Insulation Core

The Bailey Cohort™ Carrier Panels are manufactured with a stone wool insulation core which is non-combustible as defined by the Building Regulations applicable to all parts of the United Kingdom. This includes materials classified as A1 in accordance with BS EN 13501-1:2002 Fire classification of construction products and building elements – Part 1: Classification using test data from reaction to fire tests when tested to EN 13501-1:2007+A1:2009.

Quality & Durability

The Bailey Cohort™ Carrier Panel has been manufactured from the highest quality natural materials using state of the art production, complying with ISO 9001 ensuring long term reliability. The panels are also being manufactured under Environmental Management System Certification ISO 14001.

Thermal Properties & Acoustic Performance

| | | |
|---|------|------|
| Thickness | 100 | 120 |
| Weight (kg/m ²) 0.7 steel / 0.5 | 22.0 | 24.4 |
| U-value (W/m ² K) | 0.39 | 0.32 |
| Weighted Sound Reduction Rw (dB) | 33 | 33 |

Tolerances

| | |
|---------------|----------|
| Cover Width | ± 1.0 mm |
| Length <3m | ± 3.0 mm |
| Length >3m | ± 5.0 mm |
| Thickness | ± 2mm |
| Orthogonality | ± 5.0 mm |
| Weight | ± 10%. |

Materials

- Substrate
- Steel - S250-320GD acc. To EN 10346, Z140-275 to EN 10169
- Stainless steel AISI 304, Mat surface (2B)
- Aluminum Alloy H3105

External Weather Sheet
 Nominal 0.7mm Architecturally flat profile

Internal Liner Sheet
 Nominal 0.5mm liner profile

Airtightness & Watertightness

Water permeability acc. to EN12865
 Air permeability acc. to EN12114

W
E
I
D
V