

Bailey

Bailey Laser-Line™ Carcassing System

Bailey Laser-Line™ makes eaves installations faster, more accurate and more cost-effective.



Key benefits

Bailey Laser-Line™ brings the benefits of modern systemised building methods to subgrid, increasing speed, accuracy and economics of eaves installation.

The creativity and impact made possible by specifying Bailey architectural systems has been extended by the introduction of Bailey Laser-Line™.

Laser-Line™ is an accurately fabricated one-piece component that can be aligned using laser beams or traditional methods.

Using laser beams allows for faster, less complicated alignment of complete elevations with far greater accuracy than with traditional measurement. Laser-Line's strength and light weight means that the carcassing brackets fix directly to the structure at as few as two points.

Dependent on site conditions, Laser-Line™ can be installed using either mobile or standing access.

As a single component, often for the entire eaves installation, Laser-Line™ eliminates the use of separate rails, angles and channels, thus reducing the time taken to install secondary support and removing the problems of aligning separate components.

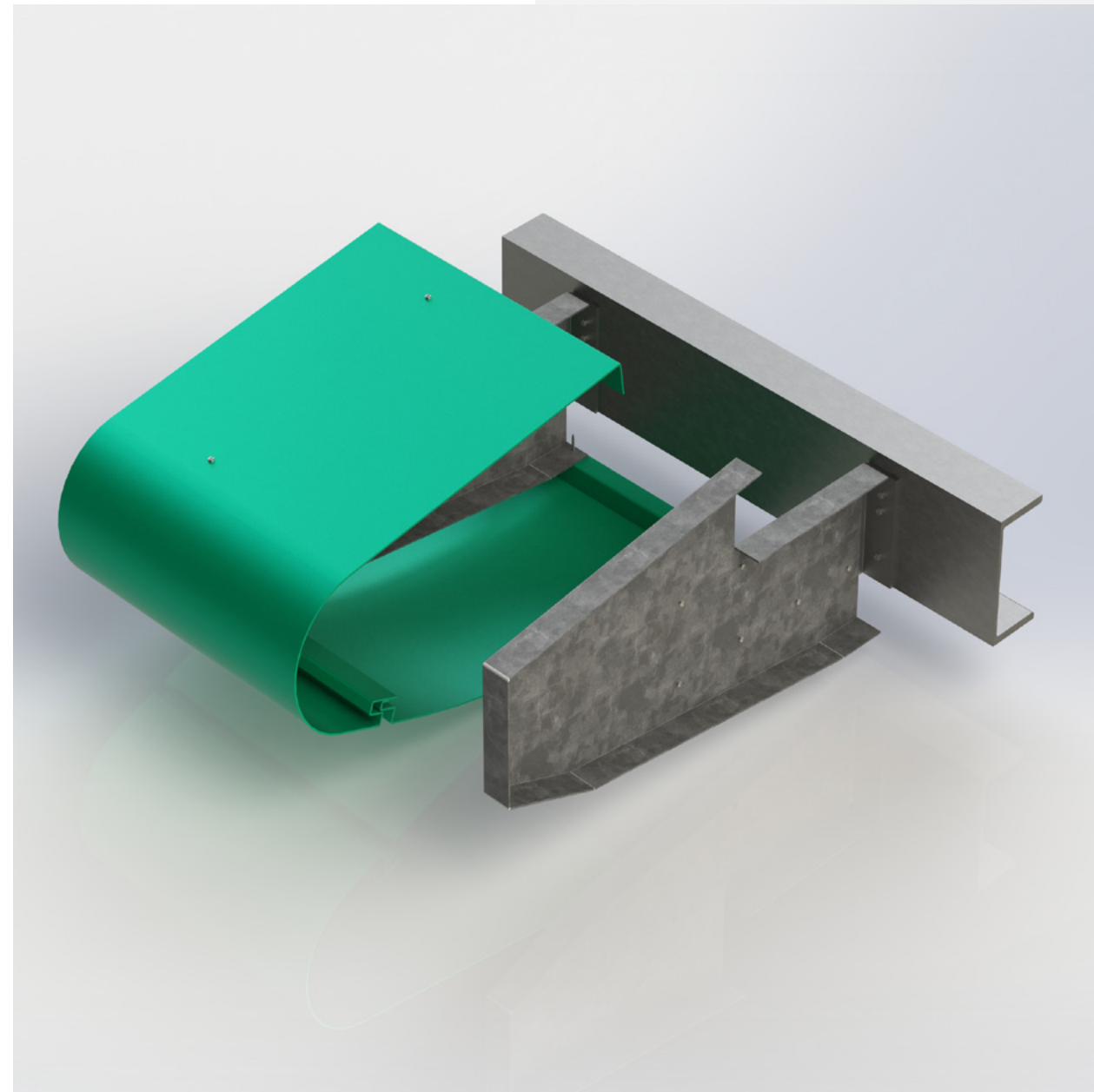
With the introduction of Laser-Line™, Bailey has again provided an innovative solution that helps architects to create interesting buildings and contractors obtain better site practice.

As Laser-Line™ offers accuracy and speed of installation the result is effective and measurable economies of installation.

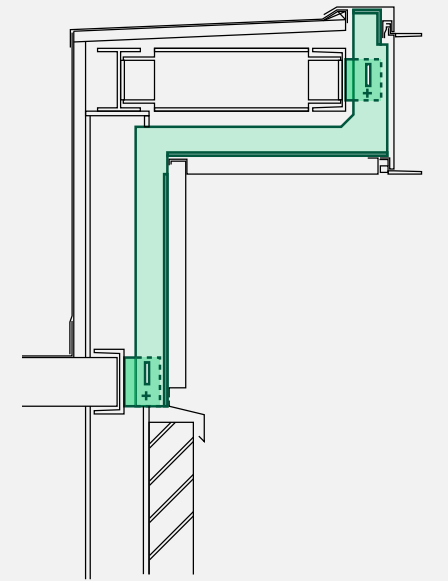


Bailey Laser-Line™

Laser-Line™ is fabricated from aluminium or galvanised steel. Thickness and fixing centres are determined according to the size and nature of the eaves design and are backed by structural engineering calculations.



Standard details



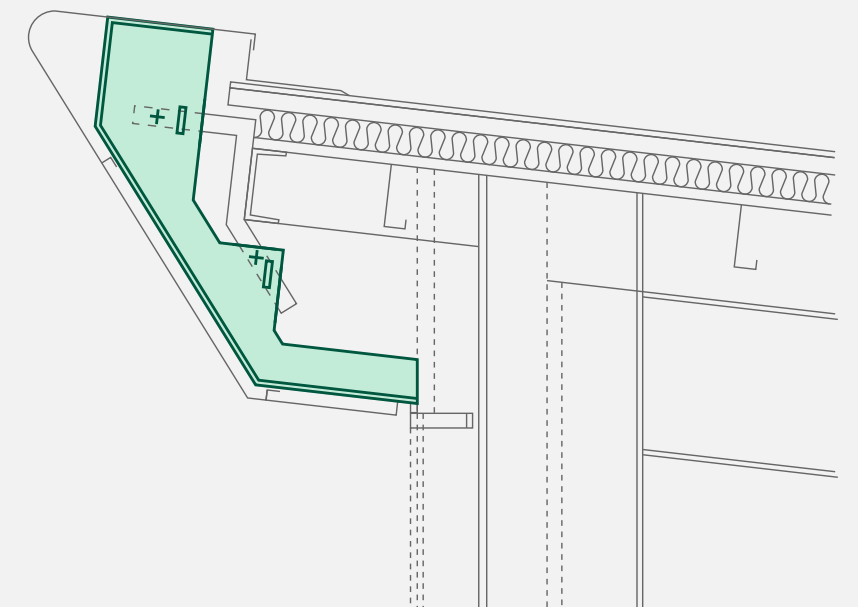
Laser-Line™ consists of a profiled support plate accurately punched and folded from sheet metal and a bracket to attach it to a structure. Because manufacture takes place off site, accuracy of each component is more easily obtained, making overall on-site accuracy easier to achieve.

The use of only 2 components ensures sufficient tolerance adjustment whilst maintaining ease of installation.

Once the Laser-Line™ carcassing has been installed other Bailey eaves systems components are simply and quickly fixed to complete the soffits, rainwater systems and eaves features.

Bailey Laser-Line™ should be selected in combination with other Bailey products such as I-Line, Bailey Cassette™ or V-Joint™ soffit systems and Bailey Rainwater Systems to create complete eaves features to meet both aesthetic and functional requirements.

Bailey Laser-Line™ is designed to combine low maintenance with an expected life of at least 25 years in most environments.



W
E
R
E
Y

+44 (0)1403 261844
ask@builtwithbailey.com
builtwithbailey.com